

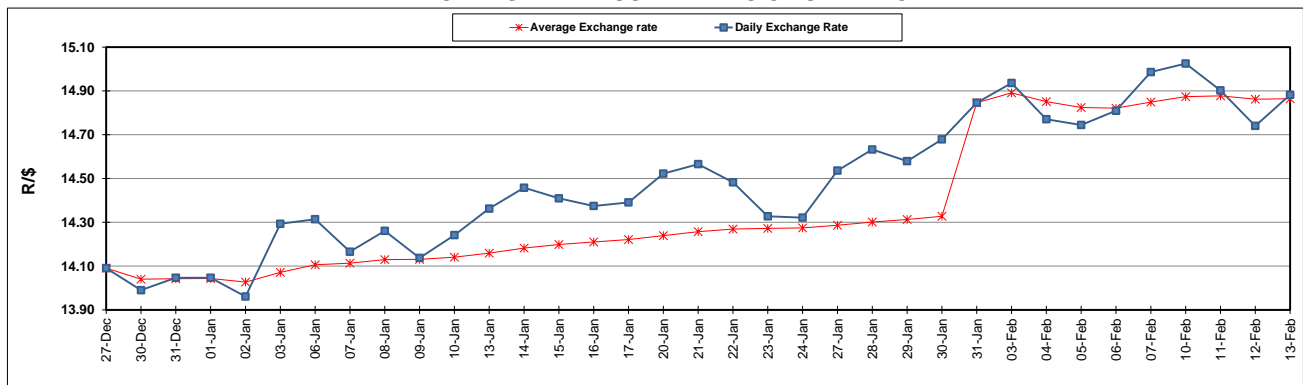
	PETROL 95 ULP	PETROL 93 ULP & LRP	DIESEL 0.05%	DIESEL 0.005%	ILL. PAR.
GAUTENG PUMP PRICE (SA c/l) AS FROM 05/02/2020	1,603.000	1,571.000	-	-	-
WHOLESALE PRICE (SA c/l) AS FROM 05/02/2020	-	-	1,457.260	1,462.660	924.728
SINGLE NATIONAL MAXIMUM RETAIL PRICE	-	-	-	-	1,176.000
BASIC FUEL PRICE - 13/02/2020 (SA c/l)	677.532	666.320	694.004	700.706	673.836
PRESS RELEASE CONTRIBUTION TO BFP 05/02/2020 - 13/02/2020 (SA c/l)	686.970	664.970	737.630	743.030	734.128
UNIT OVER/(UNDER) RECOVERY - 13/02/2020 (SA c/l)	9.438	(1.350)	43.626	42.324	60.292
AVERAGE BASIC FUEL PRICE 31/01/2020 - 13/02/2020	666.021	654.692	684.356	690.360	668.900
AVERAGE UNIT OVER/(UNDER) RECOVERY 31/01/2020 - 13/02/2020	24.849	14.179	54.774	54.170	66.128

ANALYSIS MOVEMENT OF AVERAGE OVER/(UNDER) RECOVERY

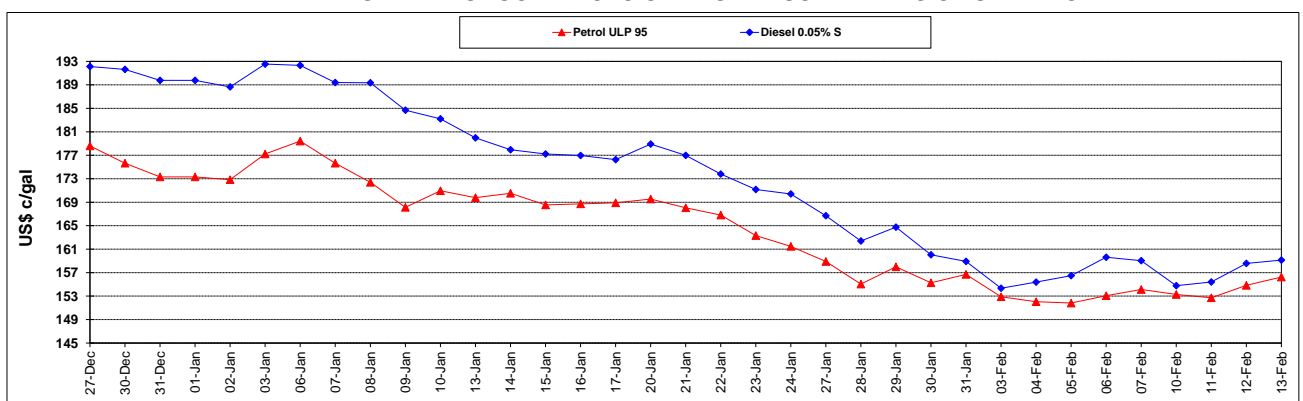
	PETROL 95	PETROL 93	DIESEL 0.05%	DIESEL 0.005%	ILL. PAR.
- MOVEMENT IN INTERNATIONAL PRODUCT PRICES	48.897	37.817	79.484	79.097	90.280
- MOVEMENT IN EXCHANGE RATE	(24.048)	(23.639)	(24.710)	(24.927)	(24.152)
AVERAGE UNIT OVER/(UNDER) RECOVERY 31/01/2020 - 13/02/2020	24.849	14.179	54.774	54.170	66.128

R/\$ EXCHANGE RATE - (R/\$14.8824 - 13/02/2020)

EXCHANGE RATE USED IN BASIC FUEL PRICE



INTERNATIONAL PRODUCT PRICES OF BASKET USED IN BASIC FUEL PRICE



BASIC FUEL PRICE IN SA CENTS PER LITRE

